

7250

Long Boom Lifting Capacity

Working radius (m)	Boom length (m)	73.2	76.2	79.2	82.3	85.3	88.4	91.4	Boom length (m)	Working radius (m)
	14.0									
14.0	14.4 m/37.5	14.9 m/34.5	15.4 m/32.6							14.0
16.0	36.0	33.5	32.1	31.2		16.5 m/25.0	17.0 m/25.0	17.6 m/21.5		16.0
18.0	34.4	31.9	30.6	29.6		25.0	25.0	21.2		18.0
20.0	32.9	30.4	29.1	28.2		25.0	24.1	20.0		20.0
22.0	31.6	29.1	27.9	26.9		25.0	23.0	18.9		22.0
24.0	30.4	27.9	26.8	25.7		24.2	22.0	17.8		24.0
26.0	28.8	26.5	25.6	24.6		23.2	21.1	16.9		26.0
28.0	26.2	25.2	24.5	23.6		22.3	20.1	16.0		28.0
30.0	23.8	23.6	23.3	22.6		21.1	19.1	15.3		30.0
32.0	21.8	21.7	21.6	21.5		19.9	18.1	14.5		32.0
34.0	19.9	19.9	19.7	19.7		18.7	17.1	13.8		34.0
36.0	18.3	18.3	18.2	18.1		17.7	16.1	13.1		36.0
38.0	16.9	16.8	16.7	16.7		16.5	15.1	12.5		38.0
40.0	15.6	15.6	15.4	15.4		15.4	14.2	11.8		40.0
42.0	14.5	14.5	14.3	14.3		14.3	13.4	11.2		42.0
44.0	13.4	13.4	13.2	13.2		13.2	12.5	10.7		44.0
46.0	12.5	12.5	12.3	12.3		12.2	11.8	10.2		46.0
48.0	11.6	11.5	11.4	11.4		11.3	11.1	9.8		48.0
50.0	10.7	10.7	10.6	10.5		10.5	10.3	9.4		50.0
52.0	10.0	10.0	9.9	9.8		9.8	9.6	8.9		52.0
54.0	9.3	9.3	9.1	9.1		9.0	9.0	8.5		54.0
56.0	8.6	8.6	8.5	8.4		8.4	8.4	7.8		56.0
58.0	8.0	8.0	7.8	7.8		7.7	7.7	7.2		58.0
60.0	7.4	7.3	7.2	7.2		7.1	7.1	6.7		60.0
62.0	6.8	6.7	6.7	6.6		6.6	6.6	6.1		62.0
64.0	6.3	6.1	6.1	6.1		6.0	6.0	5.6		64.0
66.0	64.9 m/6.1	5.6	5.6	5.6		5.6	5.6	5.1		66.0
68.0		67.5 m/5.4	5.3	5.2		5.2	5.2	4.6		68.0
70.0			4.8	4.7		4.7	4.7	4.1		70.0
72.0			70.2 m/4.8	4.3		4.3	4.3	3.6		72.0
74.0				72.8 m/4.2		3.9	3.9	3.1		74.0
76.0						74.5 m/3.7	3.5	2.6		76.0
78.0							3.2			78.0
80.0							78.1 m/3.2			80.0
Reeves	3	3	3	3		2		2		Reeves

Unit: metric ton

**Counterweight: 97.1 t,
Carbody weight: 20.0 t**

Note:
Ratings according to Japanese Construction Codes for Mobile Cranes and Japanese Safety Ordinance on Cranes, etc.
Ratings shown in are determined by the strength of the boom or other structural components.
Refer to notes P15.

Auxiliary Sheave Lifting Capacity for Long Boom (Without Main Hook)

Working radius (m)	Boom length (m)	73.2	76.2	79.2	82.3	85.3	88.4	Boom length (m)	Working radius (m)
	14.0								
14.0	15.1 m/13.5	15.7 m/13.5							14.0
16.0	13.5	13.5	16.2 m/13.5	16.7 m/13.5	17.3 m/13.5	17.8 m/13.5			16.0
18.0	13.5	13.5	13.5	13.5	13.5	13.5			18.0
20.0	13.5	13.5	13.5	13.5	13.5	13.5			20.0
22.0	13.5	13.5	13.5	13.5	13.5	13.5			22.0
24.0	13.5	13.5	13.5	13.5	13.5	13.5			24.0
26.0	13.5	13.5	13.5	13.5	13.5	13.5			26.0
28.0	13.5	13.5	13.5	13.5	13.5	13.5			28.0
30.0	13.5	13.5	13.5	13.5	13.5	13.5			30.0
32.0	13.5	13.5	13.5	13.5	13.5	13.5			32.0
34.0	13.5	13.5	13.5	13.5	13.5	13.5			34.0
36.0	13.5	13.5	13.5	13.5	13.5	13.5			36.0
38.0	13.5	13.5	13.5	13.5	13.5	13.5			38.0
40.0	13.5	13.5	13.5	13.5	13.5	13.5			40.0
42.0	13.5	13.5	13.5	13.5	13.5	13.1			42.0
44.0	13.1	13.1	12.9	12.9	12.9	12.2			44.0
46.0	12.2	12.2	12.0	12.0	11.9	11.5			46.0
48.0	11.3	11.2	11.1	11.1	11.0	10.8			48.0
50.0	10.4	10.4	10.3	10.2	10.2	10.0			50.0
52.0	9.7	9.7	9.6	9.5	9.5	9.3			52.0
54.0	9.0	9.0	8.8	8.8	8.7	8.7			54.0
56.0	8.3	8.3	8.2	8.1	8.1	8.1			56.0
58.0	7.7	7.7	7.5	7.5	7.4	7.4			58.0
60.0	7.1	7.0	6.9	6.9	6.8	6.8			60.0
62.0	6.5	6.4	6.4	6.3	6.3	6.3			62.0
64.0	6.0	5.8	5.8	5.8	5.7	5.7			64.0
66.0	5.5	5.3	5.3	5.3	5.3	5.3			66.0
68.0		4.8	5.0	4.9	4.9	4.9			68.0
70.0		68.7 m/4.6	4.5	4.4	4.4	4.4			70.0
72.0			71.3 m/4.2	4.0	4.0	4.0			72.0
74.0				3.6	3.6	3.6			74.0
76.0					3.2	3.2			76.0
78.0						76.6 m/3.1			78.0
Reeves	1	1	1	1		1		1	Reeves

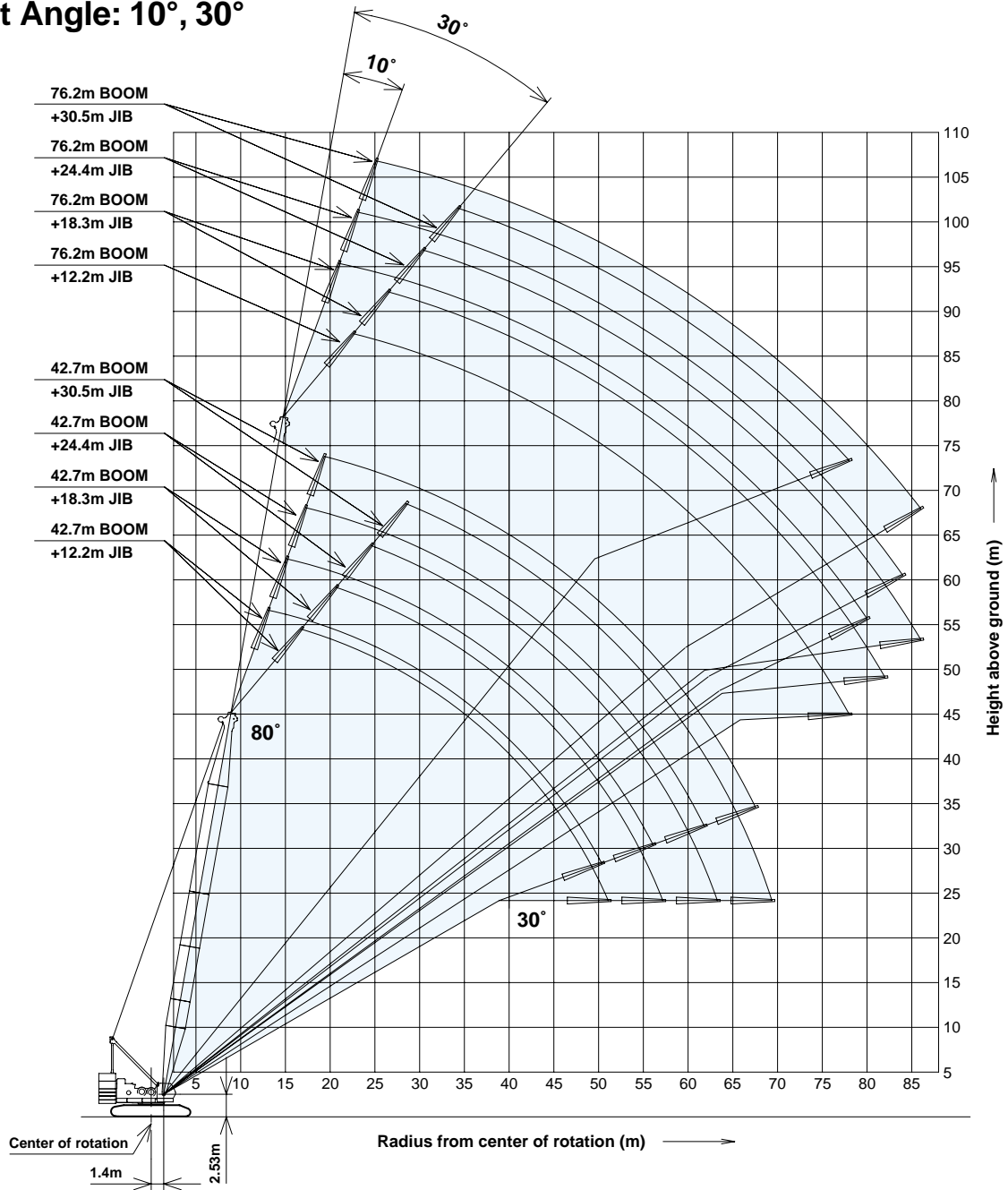
Unit: metric ton

**Counterweight: 97.1 t,
Carbody weight: 20.0 t**

Note:
Ratings according to Japanese Construction Codes for Mobile Cranes and Japanese Safety Ordinance on Cranes, etc.
Ratings shown in are determined by the strength of the boom or other structural components.
Refer to notes P15.

Fixed Jib Working Ranges

Jib Offset Angle: 10°, 30°



NOTES:

1. Ratings according to Japanese Construction Codes for Mobile Cranes and Japanese Safety Ordinance on Cranes, etc.
2. Ratings in metric tons for 360° working area.
3. Operating radius is the horizontal distance from center of rotation to a vertical line through the center of gravity of the load.
4. Weight of hook block(s), slings and other load handling accessories is included in rated load. Their total weight must be subtracted from rated load to obtain weight that can be lifted.
5. Ratings shown are based on freely suspended loads and make no allowance for such factors as wind effect on lifted load, ground conditions out-of-level, operating speeds or any other condition that could be detrimental to the safe operation of this equipment. Operator, therefore, has the responsibility to judge the existing conditions and reduce lifted loads and operating speeds accordingly.
6. Ratings are for operation on a firm and level surface.
7. At radii and boom lengths where no ratings are shown on chart, operation is not intended nor approved.
8. Boom/ jib inserts and guy lines must be arranged as shown in the "Operator's Manual".
9. Gantry must be in raised position for all conditions.
10. Boom backstops are required for all boom lengths.
11. Ratings shown in are determined by the strength of the boom or other structural component.
12. When erecting or lowering the boom length of 76.2 m, the pillow plate for erection must be placed at the end of crawlers.
13. Instruction in the "Operator's Manual" must be strictly observed when operating the machine.
14. Fixed jib ratings: Deduct weight of jib hook block, slings, and all other load handling accessories from fixed jib ratings shown.
15. Crane boom lengths for fixed jib mounting are 42.7 m to 76.2 m.
16. One part of line on hook is not allowed to use for 12.2 m jib length with offset angle 10 degrees.



HYDRAULIC CRAWLER CRANE

7250

Fixed Jib Lifting Capacities (Without Main Hook)

Unit: metric ton

Jib Offset Angle: 10°

Counterweight: 97.1 t, Carbody weight: 20.0 t

Boom length (m)		42.7				48.8				54.9				61.0			Boom length (m)
Jib length (m)		12.2	18.3	24.4	30.5	12.2	18.3	24.4	30.5	12.2	18.3	24.4	30.5	18.3	24.4	30.5	Jib length (m)
Working radius (m)	12.0	12.9 m/22.7				13.9 m/22.7											12.0
	14.0	22.4	15.3 m/15.3			22.7				15.0 m/22.7							14.0
	16.0	22.0	15.1	17.1 m/8.6		22.2	16.3 m/15.2			22.5	17.4 m/13.5						16.0
	18.0	21.6	14.8	8.5	18.5 m/5.1	21.8	15.0	18.1 m/8.5	19.6 m/5.1	22.1	13.5	19.2 m/8.5		18.4 m/13.5			18.0
	20.0	21.1	14.6	8.3	5.0	21.4	14.7	8.4	5.0	21.7	13.5	8.5	20.6 m/5.0	13.5	20.3 m/8.5	21.7 m/5.0	20.0
	22.0	20.8	14.3	8.2	4.9	21.1	14.5	8.3	4.9	21.4	13.5	8.3	5.0	13.5	8.4	5.0	22.0
	24.0	20.4	14.0	8.1	4.8	20.7	14.2	8.2	4.8	21.0	13.5	8.2	4.9	13.5	8.3	4.9	24.0
	26.0	20.1	13.8	7.8	4.6	20.4	14.0	8.0	4.7	20.7	13.5	8.1	4.8	13.5	8.2	4.8	26.0
	28.0	19.8	13.5	7.5	4.4	20.1	13.7	7.8	4.5	20.4	13.5	8.0	4.7	13.5	8.1	4.8	28.0
	30.0	19.5	13.3	7.3	4.2	19.9	13.5	7.5	4.4	20.2	13.5	7.7	4.5	13.5	7.9	4.6	30.0
	34.0	18.8	12.9	6.8	3.9	19.1	13.1	7.1	4.0	19.7	13.3	7.3	4.2	13.5	7.5	4.3	34.0
	38.0	17.4	11.9	6.5	3.6	17.8	12.8	6.7	3.8	17.4	13.0	6.9	3.9	13.2	7.1	4.0	38.0
	42.0	15.8	10.9	6.1	3.4	15.5	11.7	6.4	3.5	14.9	12.6	6.6	3.7	12.9	6.8	3.8	42.0
	46.0	14.0	10.0	5.9	3.2	13.4	10.8	6.1	3.3	12.8	11.6	6.3	3.5	12.3	6.5	3.6	46.0
	50.0	12.2	9.3	5.6	3.0	11.7	10.0	5.8	3.2	11.1	10.7	6.0	3.3	11.1	6.2	3.4	50.0
	54.0	50.3 m/12.1	8.7	5.4	2.9	10.3	9.4	5.6	3.0	9.7	10.0	5.8	3.1	9.6	6.0	3.2	54.0
	58.0		56.1 m/8.4	5.3	2.7	55.5 m/9.8	8.8	5.4	2.9	8.5	8.9	5.6	3.0	8.4	5.8	3.1	58.0
	62.0			61.7 m/5.1	2.6		61.4 m/8.4	5.3	2.7	60.8 m/7.8	7.8	5.4	2.8	7.3	5.6	3.0	62.0
	66.0				2.5			5.2	2.6		6.9	5.3	2.7	6.4	5.4	2.8	66.0
	70.0				67.2 m/2.5			67.0 m/5.1	2.6		66.6 m/6.8	5.2	2.6	5.6	5.3	2.7	70.0
74.0								72.5 m/2.5				72.3 m/5.1	2.6	71.9 m/5.2	5.2	2.6	74.0
78.0													77.7 m/2.5		77.6 m/4.7	2.6	78.0
82.0																2.5	82.0
84.0																83.0 m/2.5	84.0
Reeves	2	2	1	1	2	2	1	1	2	1	1	1	1	1	1	Reeves	

Boom length (m)		67.1			73.2			76.2			Boom length (m)
Jib length (m)		18.3	24.4	30.5	18.3	24.4	30.5	18.3	24.4	30.5	Jib length (m)
Working radius (m)	16.0										16.0
	18.0	19.4 m/13.5									18.0
	20.0	13.5	21.4 m/8.5		20.5 m/13.5			21.1 m/13.5			20.0
	22.0	13.5	8.5	22.7 m/5.0	13.5	22.3 m/8.5	23.8 m/5.0	13.5	22.9 m/8.5		22.0
	24.0	13.5	8.3	5.0	13.5	8.4	5.0	13.5	8.4	24.4 m/5.0	24.0
	26.0	13.5	8.2	4.9	13.5	8.3	4.9	13.5	8.3	4.9	26.0
	28.0	13.5	8.1	4.8	13.5	8.2	4.8	13.5	8.2	4.8	28.0
	30.0	13.5	8.1	4.7	13.5	8.1	4.8	13.5	8.1	4.8	30.0
	34.0	13.5	7.7	4.4	13.5	7.8	4.5	13.5	7.9	4.6	34.0
	38.0	13.3	7.3	4.2	13.5	7.5	4.3	13.5	7.5	4.3	38.0
	42.0	13.0	7.0	3.9	13.2	7.1	4.0	13.3	7.2	4.1	42.0
	46.0	12.2	6.7	3.7	11.7	6.8	3.8	11.4	6.9	3.9	46.0
	50.0	10.5	6.4	3.5	10.0	6.6	3.6	9.7	6.7	3.7	50.0
	54.0	9.0	6.2	3.3	8.5	6.3	3.5	8.2	6.4	3.5	54.0
	58.0	7.8	6.0	3.2	7.3	6.1	3.3	7.0	6.2	3.3	58.0
	62.0	6.7	5.8	3.1	6.2	5.9	3.2	5.9	6.0	3.2	62.0
	66.0	5.8	5.6	2.9	5.3	5.7	3.0	5.0	5.5	3.1	66.0
	70.0	5.0	5.4	2.8	4.5	5.0	2.9	4.1	4.7	3.0	70.0
	74.0	4.3	4.7	2.7	3.7	4.3	2.8	3.4	4.0	2.9	74.0
	78.0	77.2 m/3.8	4.1	2.6	3.1	3.6	2.7	2.8	3.3	2.8	78.0
82.0		3.5	2.6	2.5	3.0	2.6	80.0 m/2.5	2.7	2.7	82.0	
86.0		82.8 m/3.3	2.5		2.5	2.6	84.0 m/2.4	2.5		86.0	
90.0			88.3 m/2.5			88.0 m/2.4				90.0	
Reeves	1	1	1	1	1	1	1	1	1	Reeves	

Note:

Ratings according to Japanese Construction Codes for Mobile Cranes and Japanese Safety Ordinance on Cranes, etc.

Ratings shown in are determined by the strength of the boom or other structural components.

Refer to notes P17.

1 One part of line on hook is not allowed to use for 12.2 m jib length with offset angle 10 degrees.

2 Crane boom lengths for 12.2 m fixed jib with offset angle 10 degrees mounting are 42.7 m to 57.9 m.

Unit: metric ton

Jib Offset Angle: 30°

Counterweight: 97.1 t, Carbody weight: 20.0 t

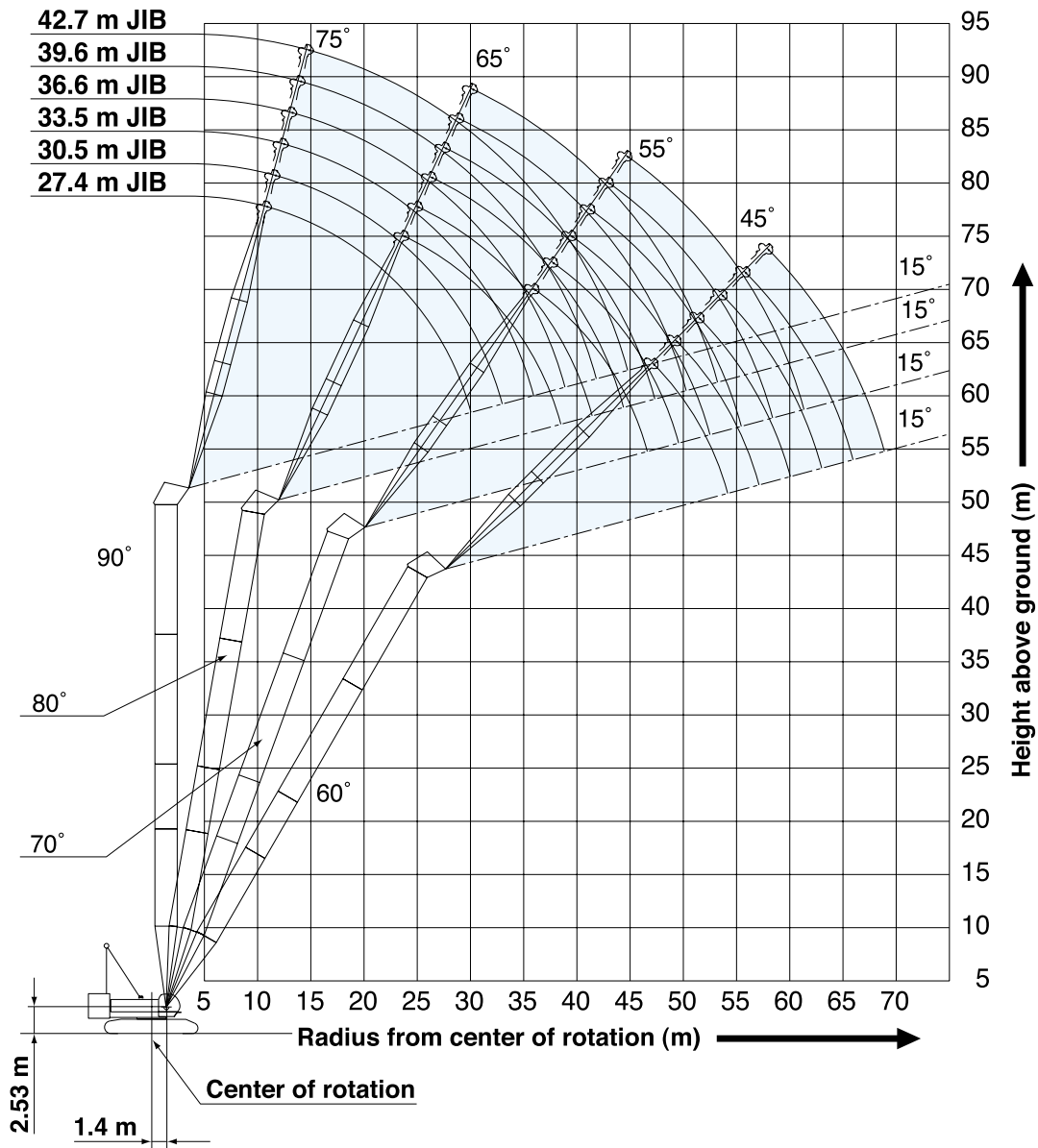
Boom length (m)	42.7				48.8				54.9				61.0				Boom length (m)	
Jib length (m)	12.2	18.3	24.4	30.5	12.2	18.3	24.4	30.5	12.2	18.3	24.4	30.5	12.2	18.3	24.4	30.5	Jib length (m)	
16.0	16.5 m/18.4				17.6 m/18.4												16.0	
18.0	17.7				18.2				18.7 m/18.4				19.8 m/13.5				18.0	
20.0	16.8	20.7 m/12.1			17.3	21.7 m/12.1			17.8				13.5				20.0	
22.0	16.0	11.8			16.6	12.1			17.1	22.8 m/12.1			13.5	23.9 m/12.1			22.0	
24.0	15.3	11.3	24.4 m/6.3		15.9	11.6	25.4 m/6.3		16.4	11.9			13.5	12.1			24.0	
26.0	14.7	10.7	6.2	27.7 m/3.3	15.2	11.1	6.2		15.7	11.4	26.5 m/6.2		13.5	11.7	27.6 m/6.2		26.0	
28.0	14.1	10.3	6.0	3.3	14.7	10.6	6.1	28.8 m/3.3	15.2	11.0	6.2	29.9 m/3.3	13.5	11.3	6.2		28.0	
30.0	13.6	9.9	5.9	3.2	14.1	10.2	6.0	3.2	14.7	10.6	6.0	3.3	13.5	10.9	6.1	30.9 m/3.3	30.0	
34.0	12.7	9.2	5.6	3.0	13.2	9.5	5.7	3.1	13.8	9.9	5.8	3.1	13.5	10.2	5.9	3.2	34.0	
38.0	12.0	8.6	5.4	2.9	12.5	8.9	5.5	2.9	13.0	9.3	5.6	3.0	13.4	9.6	5.7	3.0	38.0	
42.0	11.4	8.1	5.2	2.8	11.9	8.4	5.4	2.8	12.4	8.7	5.5	2.9	12.8	9.0	5.5	2.9	42.0	
46.0	11.0	7.7	5.1	2.6	11.4	8.0	5.2	2.7	11.8	8.3	5.3	2.7	12.2	8.6	5.4	2.8	46.0	
50.0	10.8	7.4	5.0	2.6	11.0	7.7	5.1	2.6	11.4	7.9	5.2	2.7	11.0	8.2	5.3	2.7	50.0	
54.0	51.0 m/10.8	7.2	4.9	2.5	10.4	7.4	5.0	2.5	9.9	7.6	5.1	2.6	9.5	7.9	5.1	2.6	54.0	
58.0		57.1 m/7.1	4.8	2.4	56.3 m/9.7	7.2	4.9	2.5	8.6	7.4	5.0	2.5	8.2	7.6	5.0	2.5	58.0	
62.0			4.7	2.4		7.1	4.8	2.4	61.6 m/7.6	7.2	4.9	2.4	7.1	7.4	5.0	2.5	62.0	
66.0			63.2 m/4.7	2.4		62.4 m/7.1	4.7	2.4		7.1	4.8	2.4	6.1	6.8	4.9	2.4	66.0	
70.0				69.3 m/2.4			68.5 m/4.6	2.4		67.7 m/6.7	4.7	2.4	66.9 m/5.9	5.9	4.8	2.4	70.0	
74.0								2.4				73.8 m/4.6	2.4		73.0 m/5.2	4.8	2.4	74.0
78.0								74.6 m/2.4					2.4		4.7	2.4	78.0	
82.0												79.9 m/2.4			79.1 m/4.6	2.4	82.0	
86.0																85.1 m/2.4	86.0	
Reeves	2	1	1	1	2	1	1	1	2	1	1	1	1	1	1	1	Reeves	

Boom length (m)	67.1				73.2				76.2				Boom length (m)
Jib length (m)	12.2	18.3	24.4	30.5	12.2	18.3	24.4	30.5	12.2	18.3	24.4	30.5	Jib length (m)
20.0	20.8 m/13.5				21.9 m/13.5								20.0
22.0	13.5				13.5				22.3 m/13.5				22.0
24.0	13.5	24.9 m/12.0			13.5				13.5				24.0
26.0	13.5	11.9			13.5	12.1			13.5	26.5 m/12.0			26.0
28.0	13.5	11.5	28.6 m/6.2		13.5	11.7	29.7 m/6.2		13.5	11.8			28.0
30.0	13.5	11.1	6.1	32.0 m/3.3	13.5	11.4	6.2	33.0 m/3.2	13.5	11.5	30.2 m/6.2	33.5 m/3.2	30.0
34.0	13.5	10.4	5.9	3.2	13.5	10.7	6.0	3.2	13.5	10.8	6.0	3.2	34.0
38.0	13.5	9.8	5.8	3.0	13.5	10.1	5.8	3.1	13.5	10.2	5.8	3.1	38.0
42.0	13.2	9.3	5.6	2.9	13.5	9.6	5.6	3.0	13.5	9.7	5.7	3.0	42.0
46.0	12.2	8.9	5.4	2.8	11.7	9.1	5.5	2.9	11.5	9.2	5.5	2.9	46.0
50.0	10.4	8.5	5.3	2.7	10.0	8.7	5.4	2.8	9.7	8.8	5.4	2.8	50.0
54.0	8.9	8.1	5.2	2.6	8.5	8.4	5.3	2.7	8.2	8.5	5.3	2.7	54.0
58.0	7.6	7.8	5.1	2.6	7.2	8.0	5.2	2.6	6.9	7.7	5.2	2.6	58.0
62.0	6.5	7.3	5.0	2.5	6.1	6.9	5.1	2.5	5.8	6.6	5.1	2.5	62.0
66.0	5.6	6.3	5.0	2.4	5.1	5.8	5.0	2.5	4.8	5.6	5.0	2.5	66.0
70.0	4.7	5.4	4.9	2.4	4.2	5.0	5.0	2.4	3.9	4.7	5.0	2.4	70.0
74.0	72.2 m/4.3	4.6	4.9	2.4	3.4	4.2	4.7	2.4	3.2	3.9	4.4	2.4	74.0
78.0		3.9	4.3	2.4	77.5 m/2.9	3.4	3.9	2.4	2.5	3.2	3.7	2.4	78.0
82.0		78.3 m/3.8	3.7			2.8	3.3			2.5	3.0		82.0
86.0			84.3 m/3.3			83.5 m/2.5	2.7				2.4		86.0
90.0							88.0 m/2.4						90.0
Reeves	1	1	1	1	1	1	1	1	1	1	1	1	Reeves

Note:
 Ratings according to Japanese Construction Codes for Mobile Cranes and Japanese Safety Ordinance on Cranes, etc.
 Ratings shown in are determined by the strength of the boom or other structural components.
 Refer to notes P17.

Tower Jib Working Ranges

Tower Length: 48.8 m

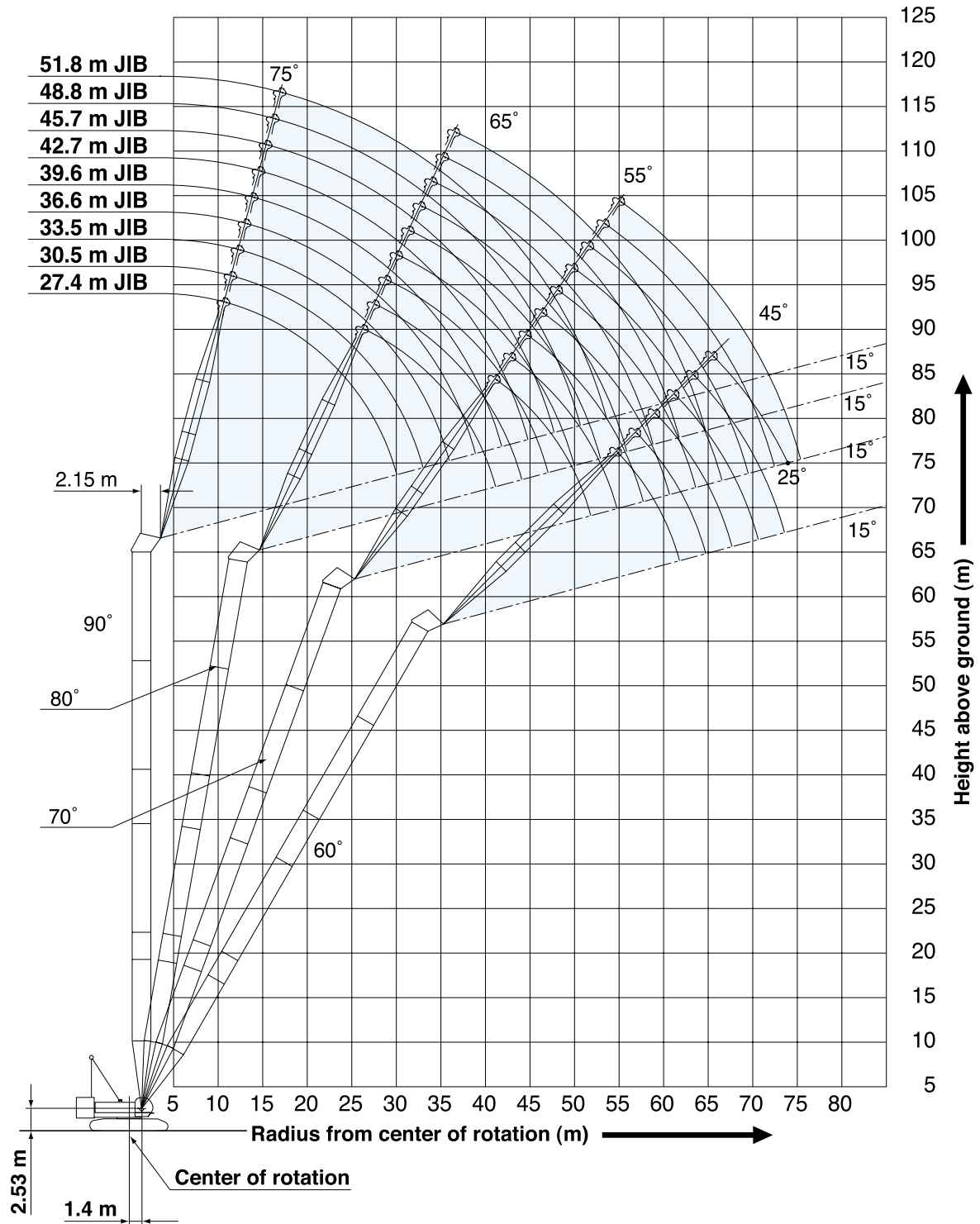


NOTES:

1. Ratings according to Japanese Construction Codes for Mobile Cranes and Japanese Safety Ordinance on Cranes, etc.
2. Ratings in metric tons for 360° working area.
3. Operating radius is the horizontal distance from center of rotation to a vertical line through the center of gravity of the load.
4. Weight of hook block(s), slings and other load handling accessories is included in rated load. Their total weight must be subtracted from rated load to obtain weight that can be lifted.
5. Ratings shown are based on freely suspended loads and make no allowance for such factors as wind effect on lifted load, ground conditions out-of-level, operating speeds or any other condition that could be detrimental to the safe operation of this equipment. Operator, therefore, has the responsibility to judge the existing conditions and reduce lifted loads and operating speeds accordingly.
6. Ratings are for operation on a firm and level surface.
7. At radii and boom lengths where no ratings are shown on chart, operation is not intended nor approved.
8. Tower/tower jib inserts and guy lines must be arranged as shown in the "Operator's Manual".
9. Tower jib hoist reeving is 8 part line.
10. Gantry must be in raised position for all conditions.

HYDRAULIC CRAWLER CRANE 7250

Tower Length: 64.1 m



11. Tower and tower jib backstops are required for all tower and tower jib combinations.
12. Ratings shown in are determined by the strength of the tower or other structural component.
13. When erecting and lowering the tower length of 64.1 m, the pillow plate for erection must be placed at the end of crawlers.
14. Instruction in the "Operator's Manual" must be strictly observed when operating the machine.
15. Tower jib ratings: Deduct weight of hook block, slings, and all other load handling accessories from tower jib ratings shown.



Tower Jib Lifting Capacities

Unit: metric ton

**Counterweight: 97.1 t,
Carbody weight: 20.0 t**

36.6 m Tower Length	Tower length (m)		36.6								Tower length (m)	
	Jib length (m)		27.4				30.5				Jib length (m)	
	Tower angle		90°	80°	70°	60°	90°	80°	70°	60°	Tower angle	
Working Radius (m)	10.0	10.9m/25.0				11.7 m/25.0						10.0
	12.0	25.0				25.0						12.0
	14.0	25.0				25.0						14.0
	16.0	25.0				25.0						16.0
	18.0	25.0				24.2						18.0
	20.0	24.2	21.7 m/23.4			23.5						20.0
	22.0	23.2	23.2			22.7	23.0 m/21.9					22.0
	24.0	21.0	21.0			21.0	21.0					24.0
	26.0	18.6	18.6			18.6	18.6					26.0
	30.0	29.9 m/11.2	15.2	31.9 m/14.1		15.1	15.1	33.7 m/13.0				30.0
	34.0		12.8	12.8		32.8 m/10.6	12.7	12.7				34.0
	38.0		36.2 m/11.8	11.1	41.2 m/10.0		11.0	11.0				38.0
	42.0			9.7	9.7		39.2 m/10.6	9.6	43.3 m/9.2			42.0
	46.0			42.3 m/9.6	8.6			45.2 m/8.7	8.5			46.0
	50.0				47.9 m/8.2				7.7			50.0
	54.0								50.8 m/7.6			54.0
Reeves			2				2				Reeves	

39.7 m Tower Length	Tower length (m)		39.7												Tower length (m)	
	Jib length (m)		27.4				30.5				33.5				Jib length (m)	
	Tower angle		90°	80°	70°	60°	90°	80°	70°	60°	90°	80°	70°	60°	Tower angle	
Working Radius (m)	10.0	10.9m/25.0				11.7 m/25.0										10.0
	12.0	25.0				25.0				12.5 m/25.0						12.0
	14.0	25.0				25.0				25.0						14.0
	16.0	25.0				25.0				24.2						16.0
	18.0	25.0				24.2				23.4						18.0
	20.0	24.2				23.5				22.6						20.0
	22.0	23.2	22.3 m/22.8			22.7	23.6 m/21.4			21.8						22.0
	24.0	20.9	20.9			21.0	20.9			21.0	24.8 m/20.2					24.0
	26.0	18.5	18.6			18.6	18.6			18.8	18.6					26.0
	30.0	29.9 m/11.2	15.2	33.0 m/13.4		15.1	15.1			15.3	15.1					30.0
	34.0		12.8	12.8		32.8 m/10.6	12.7	34.7 m/12.4		12.0	12.7	36.5 m/11.5				34.0
	38.0		36.7 m/11.5	11.1			11.0	11.0		35.8 m/9.2	11.0	11.0				38.0
	42.0			9.7	42.7 m/9.5		39.7 m/10.4	9.6	44.9 m/8.7		9.6	9.6				42.0
	46.0			43.3 m/9.3	8.6			8.5	8.5		42.6 m/9.4	8.4	47.0 m/8.2			46.0
	50.0				49.4 m/8.0			46.3 m/8.4	7.7				49.2 m/7.7	7.6		50.0
	54.0								52.4 m/7.2					6.8		54.0
56.0													55.3 m/6.6		56.0	
Reeves			2				2				2				Reeves	

Note:
Ratings according to Japanese Construction Codes for Mobile Cranes and Japanese Safety Ordinance on Cranes, etc.
Ratings shown in are determined by the strength of the tower or other structural components.
Refer to notes P21 and P22.

42.7 m Tower Length	Tower length (m)		42.7												Tower length (m)					
	Jib length (m)		27.4				30.5				33.5				36.6				Jib length (m)	
	Tower angle		90°	80°	70°	60°	90°	80°	70°	60°	90°	80°	70°	60°	90°	80°	70°	60°	Tower angle	
Working Radius (m)	10.0	10.9m/25.0				11.7 m/25.0														10.0
	12.0	25.0				25.0				12.5 m/25.0				13.3 m/23.9						12.0
	14.0	25.0				25.0				25.0				23.6						14.0
	16.0	25.0				25.0				24.2				22.9						16.0
	18.0	25.0				24.2				23.4				22.2						18.0
	20.0	24.2				23.5				22.6				21.4						20.0
	22.0	23.2	22.8 m/22.3			22.7				21.8				20.7						22.0
	24.0	20.9	20.9			21.0	24.1 m/20.9			21.0	25.4 m/19.6			19.9						24.0
	26.0	18.5	18.6			18.6	18.6			18.8	18.6			18.8	26.7 m/18.2					26.0
	30.0	29.9 m/11.3	15.2			15.1	15.1			15.3	15.1			15.2	15.0					30.0
	34.0		12.8	12.8		32.8 m/10.6	12.7	35.8 m/11.8		12.1	12.7			12.8	12.6					34.0
	38.0		37.3 m/11.4	11.1			11.0	11.0		35.8 m/9.2	11.0	11.0		9.3	10.9	39.3 m/10.4				38.0
	42.0			9.7	44.2 m/9.0		40.2 m/10.2	9.6			9.6	9.6		38.7 m/8.7	9.5	9.5				42.0
	46.0			44.4 m/8.9	8.6			8.5	46.4 m/8.4		43.2 m/9.3	8.4	48.5 m/7.9		8.4	8.3				46.0
	50.0				7.8			47.3 m/8.2	7.7			7.5	7.6		46.1 m/8.3	7.4	50.7 m/7.3			50.0
	54.0					51.0 m/7.6			53.9 m/6.9				50.2 m/7.5	6.8		53.2 m/6.7	6.7			54.0
58.0													56.8 m/6.3						58.0	
60.0																		59.8 m/5.7		60.0
Reeves			2				2				2				2					Reeves

HYDRAULIC CRAWLER CRANE

7250

Unit: metric ton

Counterweight: 97.1 t, Carbody weight: 20.0 t

45.8 m Tower Length	Tower length (m)		45.8												Tower length (m)									
	Jib length (m)		27.4				30.5				33.5				36.6				39.6				Jib length (m)	
	Tower angle		90°	80°	70°	60°	90°	80°	70°	60°	90°	80°	70°	60°	90°	80°	70°	60°	90°	80°	70°	60°	Tower angle	
Working Radius (m)	10.0	10.9m/25.0				11.7m/25.0																		10.0
	12.0	25.0				25.0				12.5m/25.0				13.3m/23.9										12.0
	14.0	25.0				25.0				25.0				23.6				14.1m/22.0						14.0
	16.0	25.0				25.0				24.2				22.9				21.4						16.0
	18.0	25.0				24.2				23.4				22.2				20.8						18.0
	20.0	24.2				23.5				22.6				21.4				20.2						20.0
	22.0	23.2	23.3m/21.7			22.7				21.8				20.7				19.6						22.0
	24.0	20.9	20.9			21.0	24.5m/20.3			21.0	25.9m/18.7			19.9				19.0						24.0
	26.0	18.5	18.6			18.6	18.6			18.8	18.6			18.8	27.2m/17.6			18.3	28.5m/16.3					26.0
	30.0	29.9m/11.3	15.2			15.1	15.1			15.3	15.1			15.2	15.0			15.2	14.9					30.0
	34.0		12.8	35.0m/12.3		32.8m/10.6	12.7	36.8m/11.5		12.1	12.7			12.8	12.6			12.8	12.5					34.0
	38.0		37.8m/11.2	11.1			11.0	11.0		35.8m/9.2	11.0	38.5m/10.9		9.3	10.9	40.3m/10.1		10.8	10.8					38.0
	42.0			9.7	45.8m/8.6		40.7m/10.1	9.6			9.6	9.6		38.7m/8.7	9.5	9.5		41.7m/7.7	9.4	9.4				42.0
	46.0			45.4m/8.8	8.6			8.5	47.9m/8.1		43.7m/9.1	8.4		8.4	8.3			8.2	8.1					46.0
	50.0				7.8			48.3m/8.1	7.7			7.5	50.1m/7.6		46.6m/8.2	7.4	52.2m/7.0		49.6m/7.2	7.2				50.0
	54.0					52.5m/7.3			6.9			51.3m/7.3	6.8		6.6	6.7			6.4	54.4m/6.3				54.0
	58.0								55.4m/6.7				6.1		54.2m/6.6	6.0		57.2m/5.9		5.8				58.0
	62.0												58.4m/6.0			61.3m/5.5				5.3				62.0
66.0																			64.3m/5.0				66.0	
Reeves			2			2			2			2		2		2			Reeves					

48.8 m Tower Length	Tower length (m)		48.8												Tower length (m)								
	Jib length (m)		27.4				30.5				33.5				36.6				Jib length (m)				
	Tower angle		90°	80°	70°	60°	90°	80°	70°	60°	90°	80°	70°	60°	90°	80°	70°	60°	Tower angle				
Working Radius (m)	10.0	10.9 m/25.0				11.7 m/25.0																	10.0
	12.0	25.0				25.0				12.5 m/25.0				13.3 m/23.9									12.0
	14.0	25.0				25.0				25.0				23.6									14.0
	16.0	25.0				25.0				24.2				22.9									16.0
	18.0	25.0				24.2				23.4				22.2									18.0
	20.0	24.2				23.5				22.6				21.4									20.0
	22.0	23.2	23.9 m/21.2			22.7				21.8				20.7									22.0
	24.0	20.9	20.9			21.0	25.1 m/19.7			21.0				19.9									24.0
	26.0	18.5	18.6			18.6	18.6			18.8	26.4 m/18.4			18.8	27.7 m/17.0								26.0
	30.0	29.9 m/11.3	15.2			15.1	15.1			15.3	15.1			15.2	15.0								30.0
	34.0		12.8	36.1 m/11.8		32.8 m/10.6	12.7	37.8 m/11.1		12.1	12.7			12.8	12.6								34.0
	38.0		11.1	11.1			11.0	11.0		35.8 m/9.2	11.0	39.6 m/10.3		9.3	10.9	41.3 m/9.6							38.0
	42.0		38.3 m/11.0	9.7			41.3 m/9.9	9.6			9.6	9.5		38.7 m/8.7	9.5	9.4							42.0
	46.0			8.6	47.3 m/8.3			8.5	49.4 m/7.8		44.2 m/8.9	8.4		8.4	8.3								46.0
	50.0			46.4 m/8.5	7.8			49.4 m/7.7	7.7			7.5	51.6 m/7.3		47.2 m/8.1	7.4	53.7 m/6.8						50.0
	54.0				7.0				6.9			52.3 m/7.1	6.8		6.6	6.7							54.0
	58.0								56.9 m/6.4				6.1		55.3 m/6.4	6.0							58.0
	62.0												59.9 m/5.8										62.0
64.0																						64.0	
Reeves			2			2			2			2		2					Reeves				

Working Radius (m)	Tower length (m)		48.8								Tower length (m)	
	Jib length (m)		39.6				42.7				Jib length (m)	
	Tower angle		90°	80°	70°	60°	90°	80°	70°	60°	Tower angle	
14.0	14.1 m/22.0				14.9 m/20.0					14.0		
16.0	21.4				19.7					16.0		
18.0	20.8				19.2					18.0		
20.0	20.2				18.6					20.0		
22.0	19.6				18.1					22.0		
24.0	19.0				17.5					24.0		
26.0	18.3	29.0 m/15.8			17.0					26.0		
30.0	15.2	14.9			15.2	30.3 m/14.7				30.0		
34.0	12.8	12.5			12.8	12.4				34.0		
38.0	10.8	10.8			10.9	10.6				38.0		
42.0	41.7 m/7.7	9.4	43.1 m/9.0		8.9	9.2	44.8 m/8.3			42.0		
46.0		8.2	8.1		44.6 m/6.8	8.0	7.9			46.0		
50.0		7.2	7.2			7.0	7.0			50.0		
54.0		50.1 m/7.1	6.4	55.9 m/6.1		53.0 m/6.4	6.2			54.0		
58.0			5.8	5.8			5.6	58.1 m/5.6		58.0		
62.0			58.2 m/5.8	5.3			61.2 m/5.3	5.2		62.0		
66.0				65.8 m/4.9				4.8		66.0		
70.0								68.7 m/4.5		70.0		
Reeves			2			2				Reeves		

Note:
 Ratings according to Japanese Construction Codes for Mobile Cranes and Japanese Safety Ordinance on Cranes, etc.
 Ratings shown in [] are determined by the strength of the tower or other structural components.
 Refer to notes P21 and P22.

Unit: metric ton

Counterweight: 97.1 t, Carbody weight: 20.0 t

51.9 m Tower Length	51.9																	Tower length (m)	
	27.4				30.5				33.5				36.6				Jib length (m)		
	Tower angle	90°	80°	70°	60°	90°	80°	70°	60°	90°	80°	70°	60°	90°	80°	70°	60°	Tower angle	
10.0	10.9 m/25.0				11.7 m/25.0													10.0	
12.0	25.0				25.0				12.5 m/25.0							13.3 m/23.9		12.0	
14.0	25.0				25.0				25.0							23.6		14.0	
16.0	25.0				25.0				24.2							22.9		16.0	
18.0	25.0				24.2				23.4							22.2		18.0	
20.0	24.2				23.5				22.6							21.4		20.0	
22.0	23.2				22.7				21.8							20.7		22.0	
24.0	20.9	24.4 m/20.6			21.0	25.7 m/19.0			21.0							19.9		24.0	
26.0	18.5	18.6			18.6	18.6			18.8	27.0 m/17.8						18.8	28.2 m/16.6	26.0	
30.0	29.9 m/11.3	15.2			15.1	15.1			15.3	15.1						15.2	15.0	30.0	
34.0		12.8	37.1 m/11.4		32.8 m/10.6	12.7			12.1	12.7						12.8	12.6	34.0	
38.0		11.1	11.1			11.0	38.9 m/10.7		35.8 m/9.2	11.0	40.6 m/10.0					9.3	10.9	38.0	
42.0		38.9 m/10.8	9.7			41.8 m/9.7	9.6			9.6	9.5					38.7 m/8.7	9.5	42.4 m/9.3	42.0
46.0			8.6	48.8 m/8.0			8.5			44.7 m/8.8	8.4					8.4	8.3		46.0
50.0			47.5 m/8.2	7.8			7.6	51.0 m/7.5			7.5	53.1 m/7.0				47.7 m/7.9	7.4		50.0
54.0				7.0				50.4 m/7.5	6.9			53.4 m/6.9	6.8				6.6	55.3 m/6.4	54.0
58.0					55.5 m/6.7				6.2				6.1				56.3 m/6.3	6.0	58.0
62.0									58.5 m/6.1				61.4 m/5.6					5.4	62.0
66.0																		64.4 m/5.1	66.0
Reeves		2				2				2				2					Reeves

51.9 m Tower Length	51.9													Tower length (m)	
	39.6				42.7				45.7				Jib length (m)		
	Tower angle	90°	80°	70°	60°	90°	80°	70°	60°	90°	80°	70°	60°	Tower angle	
14.0	14.1 m/22.0				14.9 m/20.0				15.7 m/17.4				14.0		
16.0	21.4				19.7				17.4				16.0		
18.0	20.8				19.2				16.9				18.0		
20.0	20.2				18.6				16.4				20.0		
22.0	19.6				18.1				16.0				22.0		
24.0	19.0				17.5				15.5				24.0		
26.0	18.3	29.5 m/15.4			17.0				15.0				26.0		
30.0	15.2	14.9			15.2	30.8 m/14.4			14.1	32.1 m/13.4			30.0		
34.0	12.8	12.5			12.8	12.4			12.6	12.3			34.0		
38.0	10.8	10.8			10.8	10.6			10.6	10.5			38.0		
42.0	41.7 m/7.7	9.4	44.1 m/8.7		8.9	9.2	45.9 m/7.9		8.9	9.0			42.0		
46.0		8.2	8.1		44.6 m/6.8	8.0	7.9		7.1	7.8	47.6 m/7.4		46.0		
50.0		7.2	7.2			7.0	7.0		47.5 m/6.1	6.8	6.8		50.0		
54.0		50.6 m/7.1	6.4	57.4 m/5.9		53.6 m/6.2	6.2			6.0	6.0		54.0		
58.0			5.8	5.8			5.6	59.6 m/5.3		56.5 m/5.6	5.4	61.7 m/4.8	58.0		
62.0			59.3 m/5.6	5.2			5.2	5.0			5.0	4.8	62.0		
66.0				4.8			62.2 m/5.2	4.6			65.2 m/4.6	4.4	66.0		
70.0				67.3 m/4.6				4.2				4.0	70.0		
74.0								70.2 m/4.2				73.2 m/3.7	74.0		
Reeves		2				2				2			Reeves		

Note:
 Ratings according to Japanese Construction Codes for Mobile Cranes and Japanese Safety Ordinance on Cranes, etc. Ratings shown in are determined by the strength of the tower or other structural components. Refer to notes P21 and P22.

54.9 m Tower Length	54.9																	Tower length (m)	
	27.4				30.5				33.5				36.6				Jib length (m)		
	Tower angle	90°	80°	70°	60°	90°	80°	70°	60°	90°	80°	70°	60°	90°	80°	70°	60°	Tower angle	
10.0	10.9 m/25.0				11.7 m/25.0													10.0	
12.0	25.0				25.0				12.5 m/25.0							13.3 m/23.9		12.0	
14.0	25.0				25.0				25.0							23.6		14.0	
16.0	25.0				25.0				24.2							22.9		16.0	
18.0	25.0				24.2				23.4							22.2		18.0	
20.0	24.2				23.5				22.6							21.4		20.0	
22.0	23.2				22.7				21.7							20.7		22.0	
24.0	20.9	24.9 m/20.0			21.0				21.0							19.9		24.0	
26.0	18.5	18.6			18.6	26.2 m/18.6			18.8	27.5 m/17.2						18.8	28.8 m/16.2	26.0	
30.0	29.9 m/11.3	15.2			15.1	15.1			15.3	15.1						15.2	15.0	30.0	
34.0		12.8			32.8 m/10.6	12.7			12.2	12.7						12.8	12.6	34.0	
38.0		11.1	38.2 m/11.0			11.0	39.9 m/10.3		35.8 m/9.3	11.0	41.7 m/9.6					9.3	10.9	38.0	
42.0		39.4 m/10.6	9.7			9.5	9.6			9.6	9.5					38.7 m/8.7	9.5	43.4 m/9.0	42.0
46.0			8.6			42.3 m/9.5	8.5			45.3 m/8.6	8.4					8.4	8.3		46.0
50.0			48.5 m/8.1	50.3 m/7.7			7.6	52.5 m/7.2			7.5					48.2 m/7.8	7.4		50.0
54.0				7.0			51.5 m/7.3	6.9			6.8	54.6 m/6.7				6.6	56.8 m/6.1	54.0	
58.0				57.0 m/6.4				6.1			54.4 m/6.7	6.0				57.4 m/6.0	5.9	58.0	
62.0								60.0 m/5.8				5.4					5.3		62.0
66.0												62.9 m/5.3					65.9 m/4.9		66.0
Reeves		2				2				2				2					Reeves

HYDRAULIC CRAWLER CRANE

7250

Unit: metric ton

Counterweight: 97.1 t, Carbody weight: 20.0 t

54.9 m Tower Length	54.9																	Tower length (m)	
	39.6				42.7				45.7				48.8				Jib length (m)		
	Tower angle		90°	80°	70°	60°	90°	80°	70°	60°	90°	80°	70°	60°	90°	80°	70°	60°	Tower angle
Working Radius (m)	14.0	14.1 m/22.0				14.9 m/20.0				15.7 m/17.4				16.5 m/15.4				14.0	
	16.0	21.4				19.7				17.4				15.0				16.0	
	18.0	20.8				19.2				16.9				15.0				18.0	
	20.0	20.2				18.6				16.4				14.6				20.0	
	22.0	19.6				18.1				16.0				14.2				22.0	
	24.0	19.0				17.5				15.5				13.7				24.0	
	26.0	18.3				17.0				15.0				13.3				26.0	
	30.0	15.2	30.1 m/14.9			15.2	31.4 m/14.1			14.1	32.6 m/13.4			12.5	33.9 m/12.1			30.0	
	34.0	12.8	12.5			12.8	12.4			12.6	12.3			11.6	12.1			34.0	
	38.0	10.8	10.8			10.8	10.6			10.6	10.5			10.1	10.2			38.0	
	42.0	41.7 m/7.9	9.4	45.2 m/8.3		8.8	9.2			8.8	9.0			8.6	8.7			42.0	
	46.0		8.2	8.1		44.6 m/6.9	8.0	46.9 m/7.7		7.1	7.8	48.7 m/7.1		7.3	7.6			46.0	
	50.0		7.2	7.2		7.0	7.0			47.5 m/6.1	6.8	6.8		5.6	6.6	50.4 m/6.5		50.0	
	54.0		51.2 m/6.9	6.4		6.2	6.2			6.0	6.0			50.5 m/5.3	5.8	5.8		54.0	
	58.0			5.8	58.9 m/5.7		5.6	61.1 m/5.1		5.7	5.5	5.4			5.2	5.2		58.0	
	62.0			60.3 m/5.6	5.2		5.2	5.0		5.0	5.0	63.3 m/4.7		60.0 m/5.0	4.8	65.4 m/4.3		62.0	
	66.0				4.8		63.3 m/5.0	4.6		4.6	4.4			60.0 m/5.0	4.4	4.2		66.0	
70.0				68.8 m/4.5			4.2				66.2 m/4.6	4.0		69.1 m/4.1	3.8		70.0		
74.0							71.8 m/4.0					3.6			3.4		74.0		
78.0												74.7 m/3.5			77.7 m/3.0		78.0		
Reeves		2				2				2				2			Reeves		

58.0 m Tower Length	58.0																			Tower length (m)			
	27.4				30.5				33.5				36.6				39.6				Jib length (m)		
	Tower angle		90°	80°	70°	60°	90°	80°	70°	60°	90°	80°	70°	60°	90°	80°	70°	60°	90°	80°	70°	60°	Tower angle
Working Radius (m)	10.0	10.9m/25.0				11.7m/25.0																10.0	
	12.0	25.0				25.0				12.5m/25.0				13.3m/23.9								12.0	
	14.0	25.0				25.0				25.0				23.6				14.1m/22.0				14.0	
	16.0	25.0				25.0				24.2				22.9				21.4				16.0	
	18.0	24.9				24.2				23.4				22.2				20.8				18.0	
	20.0	24.0				23.5				22.6				21.4				20.2				20.0	
	22.0	23.0				22.7				21.7				20.7				19.6				22.0	
	24.0	20.7	25.4m/19.4			21.0				21.0				19.9				19.0				24.0	
	26.0	18.3	18.6			18.6	26.7m/18.1			18.8	28.0m/16.7			18.8	29.3m/15.7			18.3				26.0	
	30.0	29.9m/11.3	15.2			15.1	15.1			15.3	15.1			15.2	15.0			15.2	30.6m/14.8				30.0
	34.0		12.8			32.8m/10.6	12.7			12.2	12.7			12.8	12.6			12.8	12.5				34.0
	38.0		11.1	39.7m/10.6			11.0	41.0m/10.0		35.8m/9.3	11.0			9.5	10.9			10.7	10.8				38.0
	42.0		39.9m/10.4	9.7			9.5	9.6			9.6	42.7m/9.2		38.7m/8.9	9.5	44.5m/8.7		41.7m/7.9	9.4				42.0
	46.0			8.6			42.9m/9.3	8.5			45.8m/8.5	8.4		8.4	8.3			8.2	46.2m/8.1				46.0
	50.0			49.6m/7.9	51.8m/7.4		7.6				7.5				48.7m/7.7	7.4		7.2	7.2				50.0
	54.0				7.0		52.5m/7.2	6.9			6.8	56.2m/6.4			6.6			51.7m/6.8	6.4				54.0
	58.0				6.2			6.1			55.5m/6.5	6.0			6.0	58.3m/5.8		5.8	60.5m/5.3				58.0
62.0				58.6m/6.1			61.5m/5.6				5.4			58.4m/5.9	5.3		61.3m/5.4	5.1				62.0	
66.0										64.5m/5.0					4.8			4.6				66.0	
70.0															67.4m/4.6			4.2				70.0	
72.0																	70.3m/4.2					72.0	
Reeves		2				2				2				2			2					Reeves	

58.0 m Tower Length	58.0																	Tower length (m)	
	42.7				45.7				48.8				51.8				Jib length (m)		
	Tower angle		90°	80°	70°	60°	90°	80°	70°	60°	90°	80°	70°	60°	90°	80°	70°	Tower angle	
Working Radius (m)	14.0	14.9 m/20.0				15.7 m/17.4												14.0	
	16.0	19.7				17.4				16.5 m/15.4				17.2 m/13.9				16.0	
	18.0	19.2				16.9				15.0				13.7				18.0	
	20.0	18.6				16.4				14.6				13.3				20.0	
	22.0	18.1				16.0				14.2				12.8				22.0	
	24.0	17.5				15.5				13.7				12.4				24.0	
	26.0	17.0				15.0				13.3				12.0				26.0	
	30.0	15.2	31.9 m/13.7			14.1	33.2 m/12.7			12.5				11.2				30.0	
	34.0	12.8	12.4			12.6	12.3			11.6	34.5 m/11.8			10.4	35.7 m/10.6			34.0	
	38.0	10.8	10.6			10.6	10.5			10.1	10.2			9.1	9.7			38.0	
	42.0	8.8	9.2			8.8	9.0			8.6	8.7			7.9	8.4			42.0	
	46.0	44.6 m/7.0	8.0	48.0 m/7.4		7.1	7.8	49.7 m/6.9		7.3	7.6			6.9	7.3			46.0	
	50.0		7.0	7.0		47.5 m/6.1	6.8	6.8		5.6	6.6	51.5 m/6.3		5.9	6.4	53.2 m/5.7		50.0	
	54.0		6.2	6.2			6.0	6.0		50.5 m/5.3	5.8	5.8		53.4 m/4.9	5.6	5.6		54.0	
	58.0		54.6 m/6.1	5.6			57.6 m/5.4	5.4			5.2	5.2			5.0	5.0		58.0	
	62.0			5.2	62.6 m/4.8		5.0	64.8 m/4.3		60.5 m/4.9	4.8				4.6	4.6		62.0	
	66.0			64.3 m/4.8	4.4		4.6	4.2			4.4	66.9 m/3.9		63.5 m/4.3	4.2			66.0	
70.0				4.0		67.2 m/4.4	3.8			4.0	3.6			3.8			70.0		
74.0				73.3 m/3.6			3.4				70.2 m/4.0			3.2		73.1 m/3.5	74.0		
78.0							76.2 m/3.2							2.8			78.0		
80.0														79.2 m/2.7			80.0		
Reeves		2				2				2				2			Reeves		

Note:

Ratings according to Japanese Construction Codes for Mobile Cranes and Japanese Safety Ordinance on Cranes, etc.

Ratings shown in are determined by the strength of the tower or other structural components. Refer to notes P21 and P22.

Unit: metric ton

Counterweight: 97.1 t, Carbody weight: 20.0 t

61.0 m Tower Length	61.0																								
	27.4				30.5				33.5				36.6				39.6								
	Tower length (m)	Jib length (m)				Jib length (m)				Jib length (m)				Jib length (m)				Jib length (m)				Tower length (m)	Jib length (m)		
Tower angle	90°	80°	70°	60°	90°	80°	70°	60°	90°	80°	70°	60°	90°	80°	70°	60°	90°	80°	70°	60°	90°	80°	70°	60°	Tower angle
Working Radius (m)	10.0	10.9m/25.0				11.7m/25.0																			10.0
	12.0	25.0				25.0				12.5m/25.0							13.3m/23.9								12.0
	14.0	25.0				25.0				25.0							23.6				14.1m/22.0				14.0
	16.0	24.6				24.6				24.0							22.9				21.4				16.0
	18.0	23.7				23.7				23.0							22.2				20.8				18.0
	20.0	22.9				22.7				22.0							21.4				20.2				20.0
	22.0	21.5				21.5				21.0							20.7				19.6				22.0
	24.0	20.0				20.0				20.0							19.9				19.0				24.0
	26.0	18.3	18.6			18.6	27.3m/17.4			18.8	28.5m/16.4						18.8	29.8m/15.2			18.3				26.0
	30.0	29.9m/11.3	15.2			15.1	15.1			15.3	15.1						15.2	15.0			15.2	31.1m/14.3			30.0
	34.0		12.8			32.8m/10.6	12.7			12.3	12.7						12.8	12.6			12.8	12.5			34.0
	38.0		11.1	40.3m/10.3			11.0			35.8m/9.4	11.0						9.5	10.9			10.7	10.8			38.0
	42.0		40.4m/10.2	9.7			9.5	9.6			9.6	43.8m/8.8					38.7m/8.9	9.5	45.5m/8.4		41.7m/7.9	9.4			42.0
	46.0			8.6			43.4m/9.2	8.5			8.4	8.4					8.4	8.3			8.2	47.3m/7.8			46.0
	50.0			7.8	53.4m/6.8		7.6				46.3m/8.4	7.5					49.3m/7.5	7.4			7.2	7.2			50.0
	54.0			50.6m/7.7	6.7		53.6m/6.9	55.5m/6.4			6.7	57.7m/5.7					6.6				52.2m/6.8	6.4			54.0
	58.0				6.1			6.0			56.5m/6.3	5.7					6.0	59.8m/5.3				5.8			58.0
	62.0				60.1m/5.8			5.4				5.2					59.4m/5.8	5.1			5.4	4.9			62.0
	66.0							63.0m/5.2				4.8						4.7			62.4m/5.3	4.5			66.0
	70.0																	68.9m/4.3					3.9		70.0
	74.0																						71.9m/3.6		74.0
	Reeves			2				2				2									2				Reeves

61.0 m Tower Length	61.0																								
	42.7				45.7				48.8				51.8												
	Tower length (m)	Jib length (m)				Jib length (m)				Jib length (m)				Jib length (m)				Tower length (m)	Jib length (m)						
Tower angle	90°	80°	70°	60°	90°	80°	70°	60°	90°	80°	70°	60°	90°	80°	70°	60°	90°	80°	70°	60°	90°	80°	70°	60°	Tower angle
Working Radius (m)	14.0	14.9 m/20.0				15.7 m/17.4																			14.0
	16.0	19.7				17.4							16.5 m/15.4								17.2 m/13.9				16.0
	18.0	19.2				16.9							15.0								13.7				18.0
	20.0	18.6				16.4							14.6								13.3				20.0
	22.0	18.1				16.0							14.2								12.8				22.0
	24.0	17.5				15.5							13.7								12.4				24.0
	26.0	17.0				15.0							13.3								12.0				26.0
	30.0	15.2	32.4 m/13.5			14.1	33.7 m/12.6						12.5								11.2				30.0
	34.0	12.8	12.4			12.6	12.3						11.6	35.0 m/11.4							10.4	36.3 m/9.7			34.0
	38.0	10.8	10.6			10.4	10.5						9.9	10.1							9.1	9.3			38.0
	42.0	8.9	9.2			8.7	9.0						8.5	8.6							7.9	8.2			42.0
	46.0	44.6 m/6.9	8.0	49.0 m/7.2		7.2	7.8						7.3	7.5							6.9	7.1			46.0
	50.0		7.0	7.0		47.5 m/6.2	6.8	50.8 m/6.7					5.6	6.5	52.5 m/6.0						5.8	6.2			50.0
	54.0		6.2	6.2			6.0	6.0					50.5 m/5.3	5.7	5.7						53.4 m/4.9	5.4	54.2 m/5.3		54.0
	58.0		55.2 m/5.9	5.6			5.4	5.4						5.1	5.1						4.8	4.8			58.0
	62.0			5.2	64.1 m/4.0		58.1 m/5.4	5.0						61.0 m/4.7	4.7						4.4	4.4			62.0
	66.0			65.3 m/4.9	4.0			4.6	66.3 m/3.7						4.3						64.0 m/4.1	4.0			66.0
	70.0				3.6			68.3 m/4.3	3.3						3.9	3.1						3.6			70.0
	74.0				3.2				77.8 m/2.5						71.2 m/3.8	2.7						3.2			74.0
	78.0				74.8 m/3.1											2.3							74.2 m/3.2		78.0
	Reeves			2				2													2				Reeves

Note:
 Ratings according to Japanese Construction Codes for Mobile Cranes and Japanese Safety Ordinance on Cranes, etc.
 Ratings shown in are determined by the strength of the tower or other structural components.
 Refer to notes P21 and P22.

HYDRAULIC CRAWLER CRANE 7250

Unit: metric ton

Counterweight: 97.1 t, Carbody weight: 20.0 t

64.1 m Tower Length	Tower length (m)		64.1																				Tower length (m)		
	Jib length (m)		27.4				30.5 m				33.5				36.6				39.6				Jib length (m)		
	Tower angle		90°	80°	70°	60°	90°	80°	70°	60°	90°	80°	70°	60°	90°	80°	70°	60°	90°	80°	70°	60°	Tower angle		
Working Radius (m)	10.0	10.9m/25.0				11.7m/25.0																		10.0	
	12.0	25.0				25.0				12.5m/24.8				13.3m/23.9										12.0	
	14.0	24.3				24.3				24.3				23.6							14.1m/22.0			14.0	
	16.0	23.6				23.6				23.6				22.9							21.4			16.0	
	18.0	22.9				22.9				22.9				22.2							20.8			18.0	
	20.0	22.2				22.2				22.0				21.4							20.2			20.0	
	22.0	21.5				21.5				21.0				20.7							19.6			22.0	
	24.0	20.0				20.0				20.0				19.9							19.0			24.0	
	26.0	18.3	26.5m/18.3			18.6	27.8m/15.9			18.8	29.1m/15.9			18.8							18.3			26.0	
	30.0	29.9m/11.3	15.2			15.1	15.1			15.3	15.1			15.2	30.4m/14.9					15.2	31.7m/13.9			30.0	
	34.0		12.8			32.8m/10.6	12.7			12.3	12.7			12.8	12.6					12.8	12.5			34.0	
	38.0		11.1	41.3m/9.9		11.0				35.8m/9.4	11.0			9.5	10.9					10.7	10.8			38.0	
	42.0		41.0m/10.0	9.7		9.5	43.1m/9.3			9.6	44.8m/8.7			38.7m/8.9	9.5				41.7m/7.9	9.4				42.0	
	46.0			8.6		43.9m/9.0	8.5			8.4	8.4			8.4	46.5m/8.1				8.2	48.3m/7.6				46.0	
	50.0			7.8		7.6				46.9m/8.2	7.5			49.8m/7.4	7.4				7.2	7.2					50.0
	54.0			51.7m/7.4	54.9m/6.0	6.9	57.1m/5.4			6.7				6.6					52.7m/6.6	6.4					54.0
	58.0				5.7		54.6m/6.7	5.3		57.5m/6.2	59.2m/4.9			6.0	61.4m/4.5				5.8						58.0
	62.0				61.6m/5.3			4.9		4.6				60.5m/5.6	4.4				5.4	63.5m/4.0					62.0
66.0						64.6m/4.6			4.2				4.0					63.4m/5.3	3.8					66.0	
70.0									67.5m/4.0				3.6					73.4m/3.0	3.4					70.0	
74.0													70.5m/3.5											74.0	
Reeves			2			2			2				2					2						Reeves	

64.1 m Tower Length	Tower length (m)		64.1												Tower length (m)								
	Jib length (m)		42.7				45.7				48.8				51.8				Jib length (m)				
	Tower angle		90°	80°	70°	60°	90°	80°	70°	60°	90°	80°	70°	60°	90°	80°	70°	60°	Tower angle				
Working Radius (m)	14.0	14.9 m/20.0				15.7 m/17.4																	14.0
	16.0	19.7				17.4				16.5 m/15.4				17.2 m/13.9									16.0
	18.0	19.2				16.9				15.0				13.7									18.0
	20.0	18.6				16.4				14.6				13.3									20.0
	22.0	18.1				16.0				14.2				12.8									22.0
	24.0	17.5				15.5				13.7				12.4									24.0
	26.0	17.0				15.0				13.3				11.9									26.0
	30.0	15.2	32.9 m/13.3			14.1				12.5				11.1									30.0
	34.0	12.8	12.4			12.6	34.2 m/12.3			11.6	35.5 m/11.4			10.4	36.8 m/9.2								34.0
	38.0	10.8	10.6			10.4	10.5			9.9	10.1			9.1	9.0								38.0
	42.0	8.8	9.2			8.7	9.0			8.5	8.6			7.9	7.9								42.0
	46.0	44.6 m/6.9	8.0			7.1	7.8			7.1	7.5			6.8	6.8								46.0
	50.0		7.0	7.0		47.5 m/6.2	6.8	51.8 m/6.4		5.6	6.5	53.5 m/5.8		5.6	5.9								50.0
	54.0		6.1	6.2			6.0	6.0	50.5 m/5.3	5.7	5.7	53.4 m/4.5	5.1	55.3 m/4.9									54.0
	58.0		55.7 m/5.8	5.6			5.4	5.4		5.1	5.1		4.5	4.5									58.0
	62.0			5.2			58.6 m/5.3	5.0		61.6 m/4.7	4.7		4.1	4.1									62.0
	66.0			4.8	3.4			4.6			4.3		64.5 m/3.7	3.7									66.0
	70.0				66.4 m/4.7	3.2			69.3 m/4.3		3.9			3.3									70.0
74.0					2.8					72.3 m/3.7			3.0									74.0	
78.0													75.2 m/2.9									78.0	
Reeves			2			2			2				2										Reeves

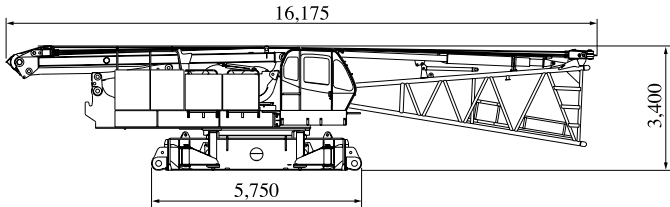
Note:
 Ratings according to Japanese Construction Codes for Mobile Cranes and Japanese Safety Ordinance on Cranes, etc.
 Ratings shown in are determined by the strength of the tower or other structural components.
 Refer to notes P21 and P22.

PARTS AND ATTACHMENTS

Dimensions: mm Weight: kg

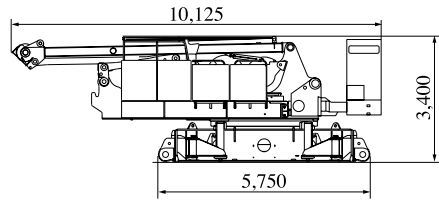
Base Machine

With boom base, carbody, gantry, trans-lifter, lower spreader, and upper spreader, main and aux. winches (non free-fall) including wire rope and boom hoist winch including wire rope
Weight: 44,500 kg Width: 3,400 mm



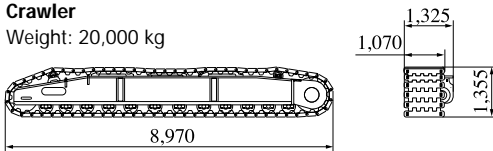
Base Machine

With carbody, gantry, trans-lifter, main and aux. winches (non free-fall) and boom hoist winch
Without lower spreader, wire rope for boom hoist, and wire rope for main and aux. hoist
Weight: 37,300 kg Width: 3,200 mm



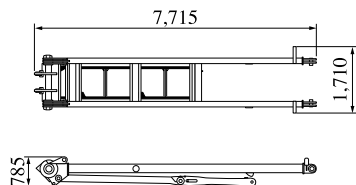
Crawler

Weight: 20,000 kg

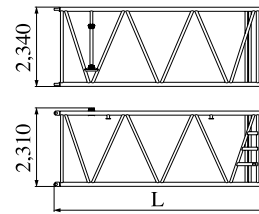


Gantry

Weight: 2,830 kg



Insert Boom

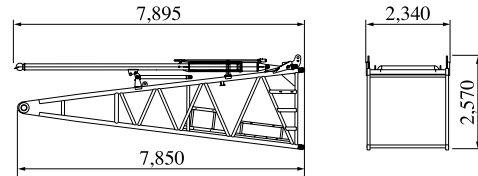


	L (mm)	Weight (kg)*
3.0m	3,175	890
6.1m	6,220	1,440
12.2m	12,320	2,540

*with boom guy cables

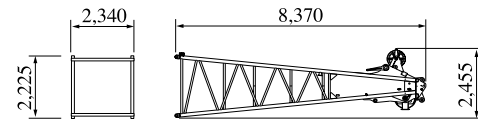
Boom Base (with backstop)

Weight: 4,180 kg



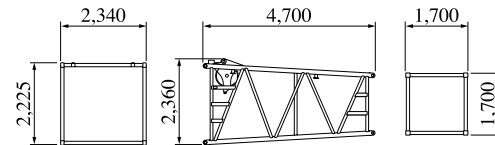
Boom Top

Weight: 3,860 kg



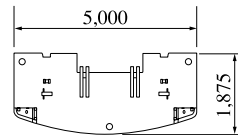
Insert Tapered Boom

Weight: 1,160 kg



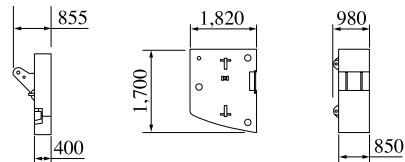
Counterweight A

Weight: 13,500 kg



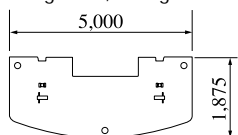
Counterweight E, E'

Weight: 11,000 kg



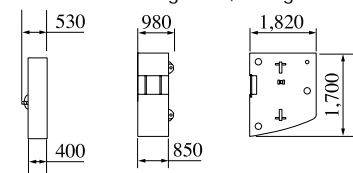
Counterweight B, C, D

Weight: 13,200 kg



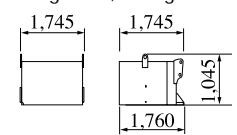
Counterweight F, F'

Weight: 11,000 kg



Carbodyweight

Weight: 10,000 kg x 2

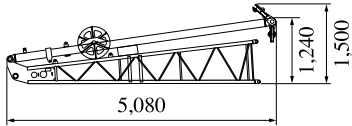


HYDRAULIC CRAWLER CRANE 7250

Dimensions: mm Weight: kg

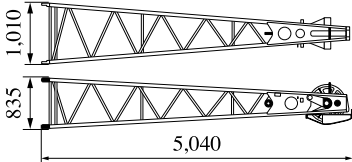
Jib Base with Strut (For Crane)

Weight: 510 kg Width: 1,040 mm



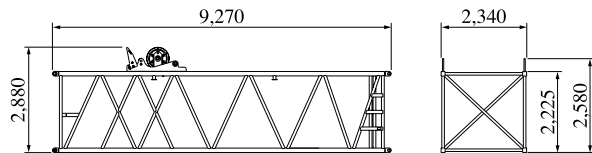
Jib Top (For Crane)

Weight: 315 kg



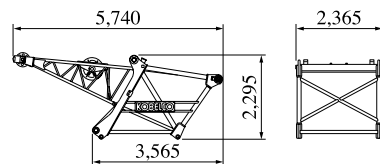
9.1 m Special Insert Boom for Tower

Weight: 2,200 kg

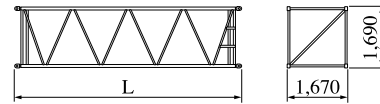


Tower Cap

Weight: 2,310 kg



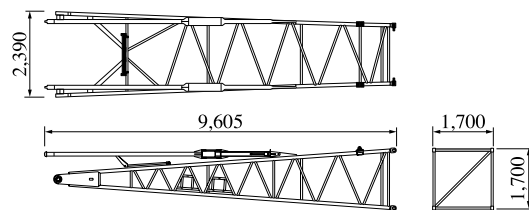
Insert Tower Jib



	L (mm)	Weight (kg)
3.0 m	3,160	320
6.1 m	6,210	530
9.1 m	9,260	740

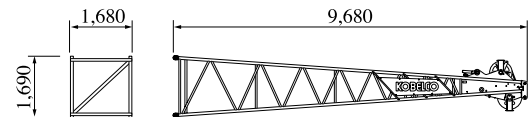
Tower Jib Base

Weight: 1,710 kg



Tower Jib Top

Weight: 1,120 kg

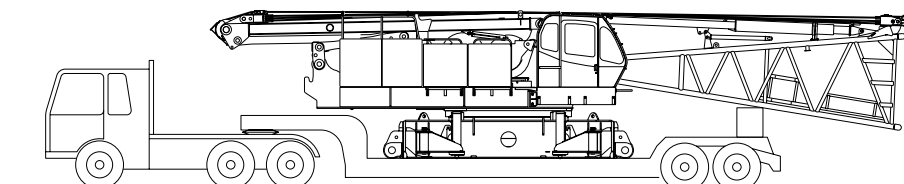


Other Attachments

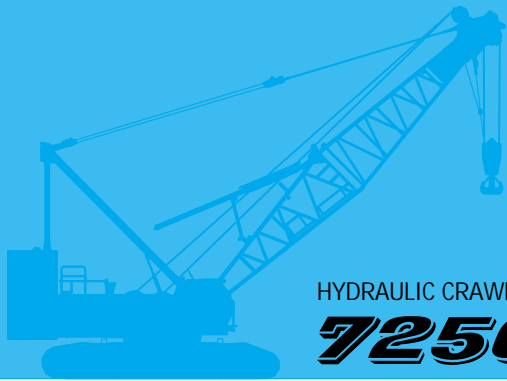
Attachments	Weight	Dimensions (L x W x H)
3.0 m insert jib (for crane)	110 kg	3,130 mm x 1,020 mm x 840 mm
6.1 m insert jib (for crane)	190 kg	6,175 mm x 1,020 mm x 840 mm
Relay jib	400 kg (with guy cables)	3,170 mm x 1,670 mm x 1,690 mm
Trans-lifter	395 kg	1,145 mm x 400 mm x 1,390 mm
Upper spreader	670 kg	2,410 mm x 250 mm x 890 mm
Lower spreader	400 kg	1,500 mm x 290 mm x 760 mm
Tower strut	2,190 kg	7,165 mm x 1,150 mm x 2,430 mm
Upper spreader for tower jib	260 kg	1,020 mm x 335 mm x 765 mm
Lower spreader for tower jib	490 kg	2,330 mm x 705 mm x 1,090 mm
250-ton hook	4,200 kg	2,310 mm x 1,620 mm x 720 mm
150-ton hook	2,300 kg	715 mm x 700 mm x 2,250 mm
70-ton hook	1,200 kg	380 mm x 700 mm x 1,825 mm
35-ton hook	900 kg	365 mm x 700 mm x 1,575 mm
Ball hook	450 kg	1,200 mm x 380 mm dia.

Note: Estimated weights may vary \pm 2%.

Transportation of Base Machine



1. Rest the lower boom on the wooden block.
2. This transportation plan depends on specifications of your trailer and the areas or countries where you transport.



HYDRAULIC CRAWLER CRANE

7250

Standard Equipment

Upper structure/Lower structure

Counterweight: 97.1 ton (total weight)
 Carbody weight: 20.0 ton (total weight)
 1,070 mm shoe crawlers
 Batteries (136Ah/5HR)
 Trans-lifter (jack system)
 Gantry raising/lowering cylinder (with storage chain)
 Electric hand throttle grip
 Variable boom hoist speed controller
 Variable main/aux. hoist speed controller
 Swing neutral-free/brake select switch
 Side deck for cab
 Steps (crawlers)
 Two front working lights
 Two rear view mirrors
 Tools (for routine maintenance)
 Boom connect pin holder
 Cable roller (for boom)
 Upper spreader storage guide
 Level gauge (carbody)

Cab Control

Air conditioner
 Luggage box
 Cup holder
 Ashtray
 Cigar lighter
 Intermittent wiper & window washer (skylight and front window)
 Sun visor
 Roof blind
 Floor mat (cloth)
 Foot rest
 Shoe tray

Safety Device

Load Moment Indicator (with boom lowering slow stop function)
 LMI release key (for hook over-hoist prevention device and boom over-hoist prevention device)
 LCD multi display
 Ultimate stop function for boom over-hoist
 Function lock lever
 Propel lever lock
 Mechanical drum lock pawl (main, aux. and boom hoist)
 Signal horn
 Swing parking brake
 Mechanical swing lock pin (four positions)
 Swing flashers/warning buzzer

Note: Standard equipment may vary depending on your areas or countries.

Due to our policy of continual product improvements all designs and specifications are subject to change without advance notice.

Copyright by KOBELCO CRANES CO., LTD. No part of this catalog may be reproduced in any manner without notice.

KOBELCO CRANES CO., LTD.

17-1, Higashigotanda 2-chome, Shinagawa-ku, Tokyo 141-8626 JAPAN
 Tel: +81-3-5789-2130 Fax: +81-3-5789-3372

Inquiries To:

KOBELCO is the corporate mark used by Kobe Steel on a variety of products and in the names of a number of Kobe Steel Group companies.

Bulletin No. 7250-2FSPEC-AO3 0802011F Printed in Japan